

# STOP THIS INVADER!

---

## SPOTTED LANTERNFLY

### What is it?

The spotted lanternfly is an invasive insect from Asia currently found in southeastern Pennsylvania, and sightings have been reported in some neighboring states.

The pest threatens important agricultural commodities, including the grape, hardwood, tree fruit, landscape, and nursery industries – sectors that contribute nearly \$18 billion annually to Pennsylvania's economy.

This planthopper weakens plants by feeding on sap. It excretes a sugary substance called honeydew, which attracts stinging insects, promotes the growth of sooty mold, and causes a messy nuisance for residents.

To help stop the spread of spotted lanternfly, the state has issued a quarantine order requiring the inspection of all items moving within or out of the area to prevent the transport of any living life stage of the pest.



**REPORT** spotted lanternfly sightings at [extension.psu.edu/spotted-lanternfly](https://extension.psu.edu/spotted-lanternfly).

**DESTROY** all life stages that you find. Check your car and outdoor equipment before traveling.

**SHARE** your knowledge with others!

**See it? Report It?**

[extension.psu.edu/spotted-lanternfly](https://extension.psu.edu/spotted-lanternfly)

---

---

# SPOTTED LANTERNFLY

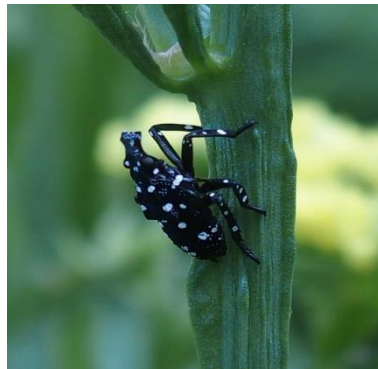
## Know What to Look For

Spotted lanternfly adults are about 1 inch long and half inch wide with wings folded. Nymphs are 1/8 to 1/2 inch long and develop through four stages, all of which are wingless.

Egg masses are gray, mud-like covering, which can become dry and cracked over time. Older egg masses may lose their covering and appear as columns of 30-50 seed-like eggs. Egg masses can be found on trees, rocks, and other surfaces.



**ADULT (with wing closed) can be found JUL-DEC**



**NYMPH (early stage) can be found APR-JUL**



**EGG MASS (fresh) can be found SEP-DEC**



**ADULT (with wing open) can be found JUL-DEC**



**NYMPH (late stage) can be found JUL-SEP**



**EGG MASS (older) can be found JAN-JUN**

## Learn more at:

**[extension.psu.edu/spotted-lanternfly](https://extension.psu.edu/spotted-lanternfly)**

---

This publication was produced by Penn State Extension in collaboration with the Pennsylvania Department of Agriculture and the United States Department of Agriculture.

[extension.psu.edu](https://extension.psu.edu)

Penn State College of Agricultural Sciences research and extension programs are funded in part by Pennsylvania counties, the Commonwealth of Pennsylvania, and the U.S. Department of Agriculture.

*This publication is available in alternative media on request.*

Penn State is an equal opportunity, affirmative action employer, and is committed to providing employment opportunities to all qualified applicants without regard to race, color, religion, age, sex, sexual orientation, gender identity, national origin, disability, or protected veteran status.