

Township of Derry

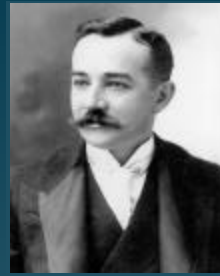
Public Park System

*Providing natural open space
for the recreational use of our
residents and guests.*



Directory of Recreational Amenities

Hershey's Commitment to Recreation



Famous candy maker Milton Snavely Hershey returned to the farm community where he was born and broke ground on the Hershey Chocolate Factory in 1903. Mr. Hershey began to establish a model industrial town to provide for the needs of his employees. He built roads and homes, established utilities and services, schools and businesses. In addition to providing for the resident's essential needs, Mr. Hershey felt recreational opportunities were highly important. During the next nine years, following the construction of the Chocolate Factory, Hershey Park, the Ballroom, and Hershey Park Pool were built. In the 1930s, the Community Building, Hershey Sports Arena, and Hershey Stadium were added as recreational venues in the community.



In an effort to meet the growing needs of the community, the Cocoa Avenue Plaza, better known today as the Hershey Recreation Center, was built on Cocoa Avenue in 1963 by the Hershey Chocolate Corporation. A second outdoor pool was built in 1967. A non-profit organization, funded by the Hershey Entities, operated the Hershey Plaza until 1979, when it was donated to the township. The pool's innovative design with a retractable dome still functions today, continuing to provide year-round use.



Today, Mr. Hershey's high regard for meeting the

recreational needs of the residents of the community is still evident in Hershey. The township is committed to sports, exercise, and recreational family fun. The township owns and maintains the Hershey Recreation Center, Cocoa Castle, Cocoa Blast Skate Park, the Jonathan Eshenour Memorial Trail, and eight public parks.

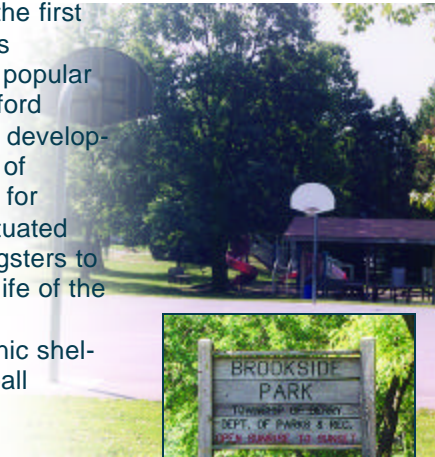
This publication is designed to showcase our recreational assets and to provide residents and guests with a description of each of the parks in order to assist you in planning your next outing. It is our hope that you treasure the park system and make full use of all the system has to offer.



Brookside Park

Church Road Brookside Park was the first park purchased by the township and was acquired in 1976. This 10 acre park is a popular site for the neighboring residents of Stafford Heights, Chadds Ford, and Glenn Acres developments. Youth soccer is the primary use of Brookside Park, meeting regional needs for fields. As its name states, the park is situated along a brook; a wonderful site for youngsters to explore under rocks and observe water life of the region.

The park features picnic tables, a picnic shelter, playground, barbeque grills, basketball courts, and a multi-purpose field.



Bullfrog Valley Park



Bullfrog Valley Road The township leased Bullfrog Valley Park from the Smith family for nine years until the the Smiths graciously donated the property to the township in 1985.

Bullfrog Valley Park is a quaint 3 acre park that is conveniently located near S.R. 322. A beautiful pond draws residents and visitors to fish, have lunch, or walk on the Jonathan Eshenour Memorial Trail. The back of the park has a canopy of trees and is a tranquil setting to relax by the stream. This park is the host to the popular annual children's Fishing Derby sponsored by the township.

In addition to the pond and access to the trail, the park features a picnic shelter with tables and grills.

Fishing regulations at the pond are established and enforced by the Pennsylvania Fish and Boat Commission.



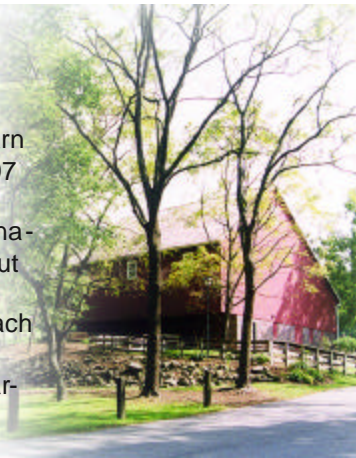
Shank Park

Bullfrog Valley Road Shank Park, described as the crown jewel of the township's park system, is 90 acres of green rolling hills. The township purchased the property in 1977 from the Shanks. The historic Shank family barn was destroyed by fire and reconstructed in 1997 to maintain the heritage of the park.

Shank is the host of many large athletic tournaments and community special events throughout the year. The township's easter egg hunt and Shank Park Halloween attract a large crowd each year.

The park features a nature trail, memorial garden, and access to the Jonathan Eshenour Memorial Trail. Provided within the park are a picnic shelter, picnic tables, barbeque grills, two playgrounds, two softball fields, two multi-purpose fields, and two fire ring sites. Cross country skiers enjoy their sport at Shank in the winter.

It's a perfect location for an outing, providing a variety of fun activities for each member of the family.



Palmdale Park



Washington Avenue Located near the eastern boundary of the township, off of Chocolate Avenue, Palmdale Park is most popular with soccer, lacrosse and basketball players.

The 10 acre park was acquired in 1979 from the Hershey Trust Company. This wide open area features a multi-purpose field, baseball field, basketball court, picnic shelter, picnic tables, a barbeque grill, and a playground. The Jonathan Eshenour Trail provides access to the park and continues to the township line.

Boathouse Park

Boathouse Road Boathouse Park is located along the Swatara Creek, which offers an opportunity unique to all of the other township parks. This 8 acre recreational site is leased from the Hershey Trust Company.

The township installed a boat launch to provide access to the waterway. Residents can enjoy a day of fishing, boating, swimming, and picnicking in this beautiful natural environment. The park has picnic tables located under the trees along the creek, a multi-purpose open area, and is closely located near wetlands where wildlife may be observed. Boathouse Park is a part of the Swatara Creek Water Trail.

Boathouse Park is a quiet and tranquil setting to relax outdoors.



Koons Park



Sandhill Road Koons Park was donated to the township by the Sandhill Lions Club. This neighborhood park is mostly utilized for baseball, featuring two fields. A large pavilion and playground in a wooded setting is a perfect site for a family gathering.



Founders Park

Homestead Road Founders Park was built in September, 2000, as a collaborative effort between the Township, Hershey Trust Company, and the Derry Township School District. The park was built on 41 acres that were donated by the Trust, and is located across from the Hershey High School.

Founders is the host of over twelve hundred athletic competitions and special events throughout the year. The vast open space accommodates large community events.

Founders features four multi-purpose athletic fields, one baseball field, one softball field, two playground areas, a picnic pavilion, and rest rooms.

The park meets field use needs of the Milton Hershey School, Hershey High School, and numerous athletic associations.



Gelder Park



Gelder Drive Gelder Park is surrounded by residential developments off of Middletown Road. This close proximity to neighborhoods makes the park easily accessible by foot or bike.

The park is 28 acres and was acquired by the township with the development of Deer Run.

There's no shortage of activity for young and old at the newest of the township's parks. The park has a large playground, a tennis court, basketball court, two sand volleyball courts, a picnic pavilion with tables, barbeque grills, a baseball and multi-purpose field, and a concession stand with rest rooms. Highlights of the park include a life fitness trail, walking path, and nature trails. The park will host a variety of youth sports activities while maintaining the feel of a relaxing natural park. Future plans for the park include connection to the Jonathan Eshenour Memorial Trail and access to the Swatara Creek.

Park Amenities Chart

Parks	Acres	Amenities													
Boathouse	8														
Brookside	10														
Bullfrog	3														
Palmdale	10	Picnic Tables	Picnic Shelter	Playground	Swings	Sandbox	Fishing	Boat Launch	Nature Trails	BBO Grills	Softball Fields	Baseball Fields	Soccer Fields	Basketball Courts	Volleyball Courts
Shank	90														
Koons	4														
Founders	41														
Gelder	28														

Cocoa Blast Skate Park

Cocoa Avenue In an effort to meet the growing needs for a safe monitored location for residents on wheels, the township built an outdoor skate park in the lower lot at the Hershey Recreation Center.

The park features 60 ramps and rails for adventurous bladers and boarders who seek a challenge.

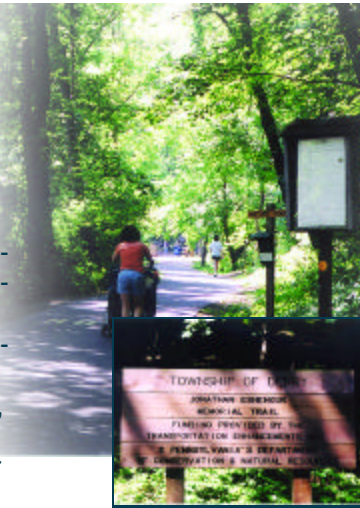
The park is open from April through November, weather permitting. Rates vary weekdays to weekends. Memberships are available.



Jonathan Eshenour Memorial Trail

The Jonathan Eshenour Memorial Trail is 11.5 miles and travels through a majority of the township, providing access to the public parks, neighborhoods, and commercial establishments. The trail was named in memory of Jonathan Eshenour, a young and vibrant member of the community, who was fatally injured in a biking accident in 1997.

The trail presents an array of quality recreational opportunities. It is a wonderful avenue to exercise, play, experience nature, relax, and enjoy quality time with friends and family. The trail travels conveniently near the township's parks, providing additional activities such as sports, fishing, picnicking, and much more. The trail provides a location for safe, natural recreational activities for families to enjoy for generations.



Park Information

Park Maintenance The parks are maintained through revenue generated from property taxes. We ask that you treat the parks as though they were your own property. Please report vandalism or dangerous activities to the Derry Township Police Department at 534-2201.

Rules Rules are essential to the safety of park users. The rules are posted in many of the parks and on the township's website, www.derrytownship.org. Please take a moment to review them. Pet owners are asked to be responsible and maintain control over their pets and to remove pet waste from the parks and trails.

Advisory Board and Friends The township park system is supported by the Parks and Recreation Advisory Board and the *Friends of Parks and Recreation*. Resumes for appointment to the board are accepted at the municipal building in December for appointments at the township's reorganization meeting. Residents that are interested in becoming a *Friend* can contact the Department of Parks and Recreation at 533-7138.

Pavilions Park pavilions are available for rent. The Park Facility Use form is on the website, or arrangements may be made by calling the Department of Parks and Recreation at 533-7138.

Township of Derry Department of Parks and Recreation, 605 Cocoa Avenue, Hershey 17033 (717) 533-7138.