

MAP KEY	INTERSECTION/LOCATION	DESCRIPTION
1	Caracas Ave & Hillcrest Road	Future Intersection Improvement
2	Locust Lane & Carter Cove	Intersection Realignment
3	Middletown Road Capacity Improvements	October 2016 Middletown Road Corridor Study
4	Gramercy Place & Middletown Road (S.R. 2003)	Signalize Intersection and Trail Crossing
5	Bullfrog Valley Road & Roush Road	Intersection Improvement/Realignment
6	Hersheypark Drive (S.R. 0039) & Walton Ave/Mae St	Improvements recommended in 2014 Walton Ave Study
7	Governor Road (S.R. 322) & University Drive	Improvements recommended in 2015 Route 322 Study
8	Governor Road (S.R. 322) & Centerville Lane	Improvements recommended in 2015 Route 322 Study
9	Governor Road (S.R. 322) & Hillview Lane	Improvements recommended in 2015 Route 322 Study
10	Governor Road (S.R. 322) & Areba Ave	Improvements recommended in 2015 Route 322 Study
11	Governor Road (S.R. 322) & Beech Ave	Improvements recommended in 2015 Route 322 Study
12	Governor Road (S.R. 322) & Greenlea Road	Improvements recommended in 2015 Route 322 Study
13	Governor Road (S.R. 322) & Cherry Drive	Improvements recommended in 2015 Route 322 Study
14	Governor Road (S.R. 322) & Hockersville Rd/Fishburn Rd (S.R. 743)	Improvements recommended in 2015 Route 322 Study
15	Governor Road (S.R. 322) & Elm Ave	Improvements recommended in 2015 Route 322 Study
16	Waltonville Road & Route 322 EB On-Ramp	Future Intersection Improvement
17	Waltonville Road & Wood Road	Future Intersection Improvement
18	Bullfrog Valley Road & Wood Road	Future Intersection Improvement
19	West Chocolate Ave & University Drive	Future Intersection Improvement
20	Fishburn Avenue & Cocoa Avenue	Future Intersection Improvement
21	Chocolate Avenue & Old West Chocolate Ave	Future Intersection Improvement
22	Park Avenue & Northeast Drive	Future Intersection Improvement
23	Dartmouth Road to Stoverdale Road	New Access Road
24	Middletown Road to Bullfrog Valley Road	Construct new collector roadway (Alignment TBD)
25	Hope Road	Extend Hope Road to Fishburn Road (S.R. 743)
26	Orchard Road	Extend Orchard Road for a new railroad crossing
27	North of W. Chocolate Avenue	New Street for Improved Access per 2016 Comp. Plan
28	McKinley Ave/Roosevelt Ave/Howard Street	Planned Roadway Network
29	Courtland Circle	Roadway Extension to new collector roadway
30	Route 322/Hersheypark Drive Interchange	Improvements recommended in 2009 US 322 Study
31	Downtown Hershey	Enhancements recommended in 2015 Master Plan
32	Middletown Road to Joanne Ave	Alyshia Lane Extension
33	Meadow Lane	Corridor Enhancement

LOWER PAXTON

EAST HANOVER

NORTH LONDONDERRY

PALMYRA

NORTH LONDONDERRY

SOUTH LONDONDERRY

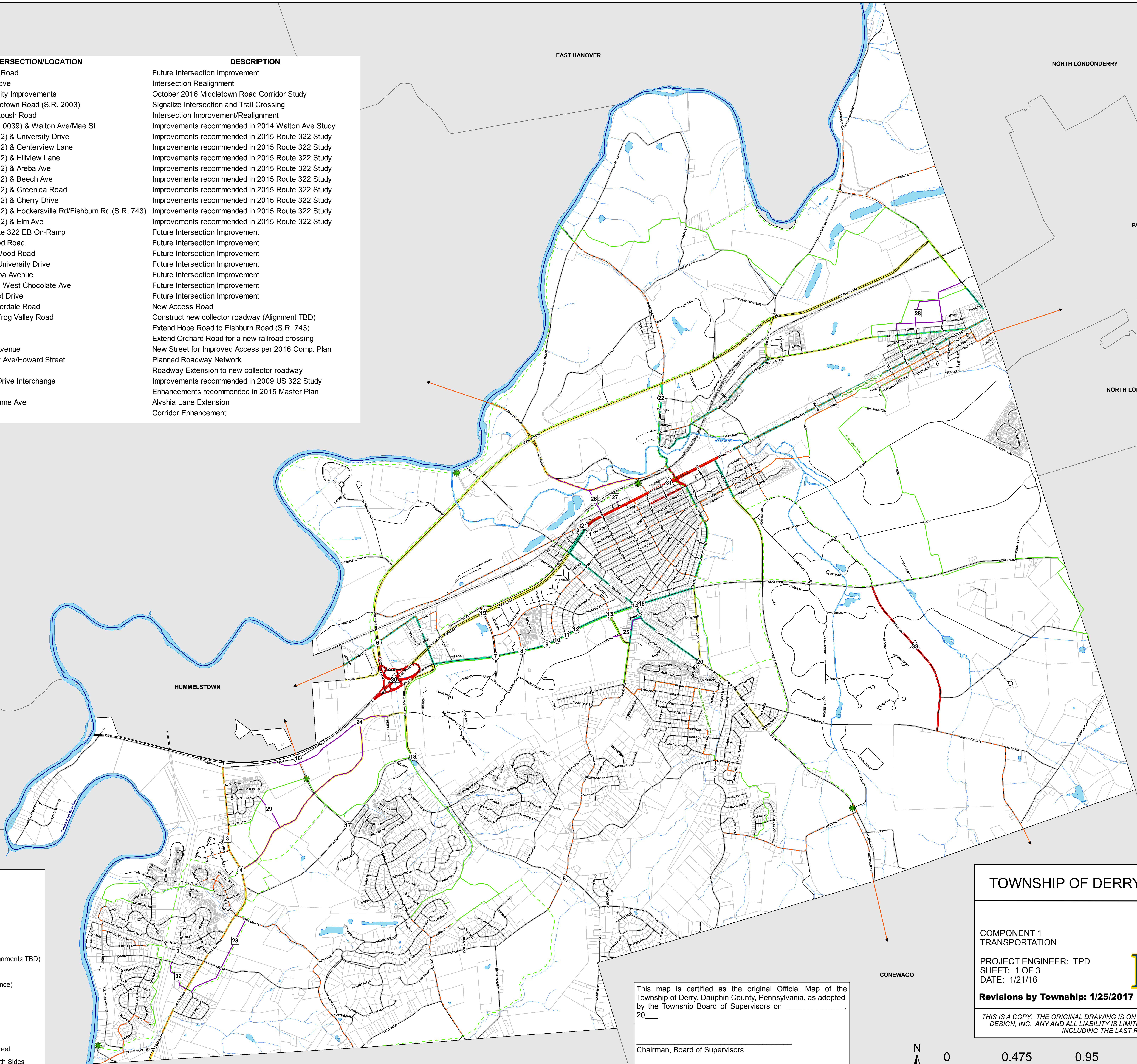
HUMMELSTOWN

SWATARA

CONEWAGO

LONDONDERRY

Legend	
Type of Improvements	
○	Intersection
□	Roadway
△	Streetscape
—	Proposed Roads
—	Future Trail Improvements (Final Alignments TBD)
★	Future Trailheads
→	Trail Connections (Shown for Reference)
—	Future On-Road Bike Improvements
—	Existing On-Road Bike Network
—	Land Trail
—	Water Trail
■	Future Sidewalk on Both Sides of Street
■	Future Sidewalk/Walkway One or Both Sides



This map is certified as the original Official Map of the Township of Derry, Dauphin County, Pennsylvania, as adopted by the Township Board of Supervisors on _____, 20__.

Chairman, Board of Supervisors _____

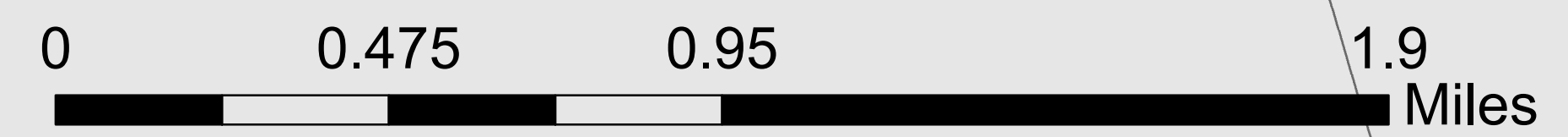
TOWNSHIP OF DERRY OFFICIAL MAP

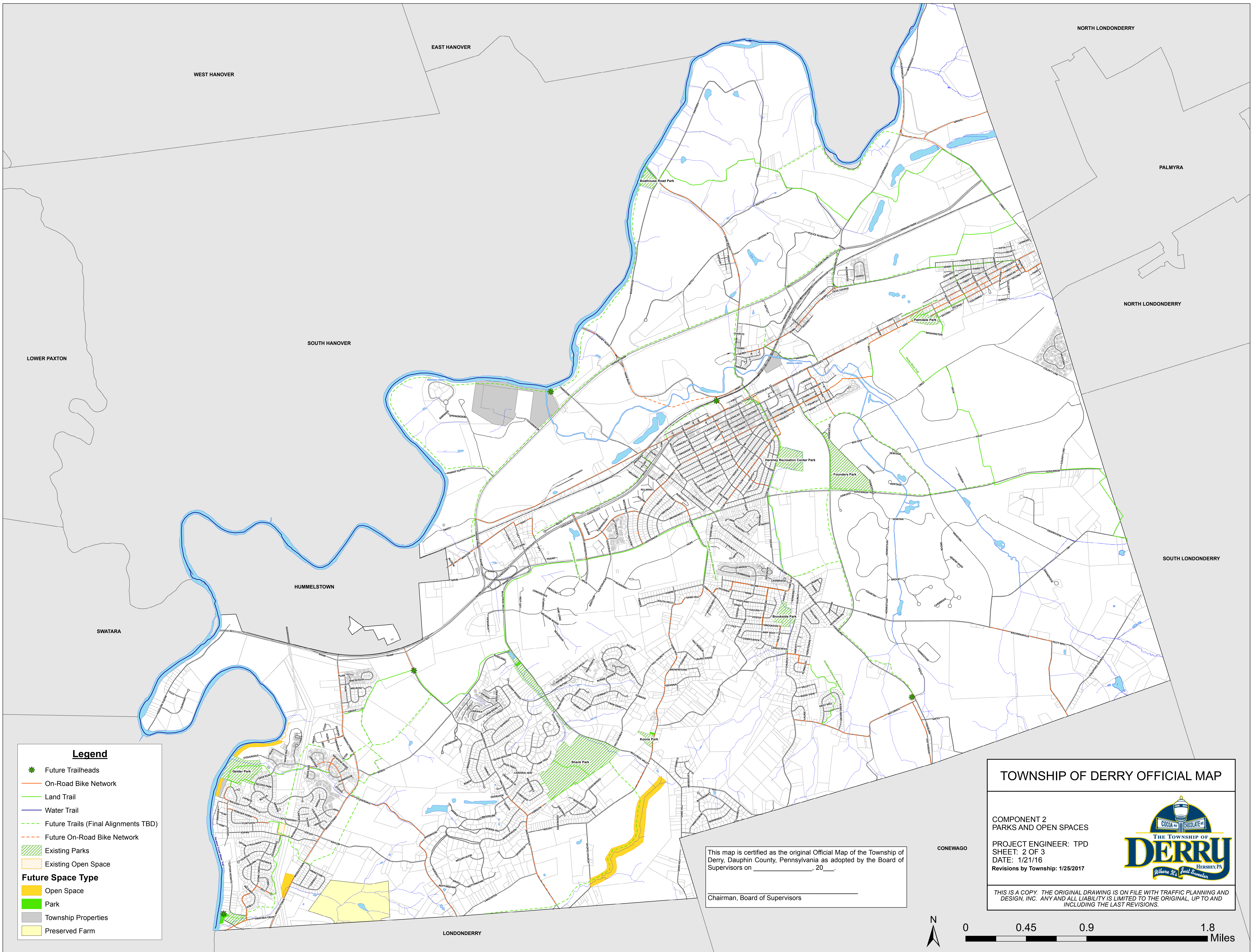
COMPONENT 1
TRANSPORTATION
PROJECT ENGINEER: TPD
SHEET: 1 OF 3
DATE: 1/21/16



Revisions by Township: 1/25/2017

THIS IS A COPY. THE ORIGINAL DRAWING IS ON FILE WITH TRAFFIC PLANNING AND DESIGN, INC. ANY AND ALL LIABILITY IS LIMITED TO THE ORIGINAL, UP TO AND INCLUDING THE LAST REVISIONS.





Legend

- * Future Trailheads
- On-Road Bike Network
- Land Trail
- Water Trail
- Future Trails (Final Alignments TBD)
- Future On-Road Bike Network
- Existing Parks
- Existing Open Space
- Future Space Type**
- Open Space
- Park
- Township Properties
- Preserved Farm

This map is certified as the original Official Map of the Township of Derry, Dauphin County, Pennsylvania as adopted by the Board of Supervisors on _____, 20____.

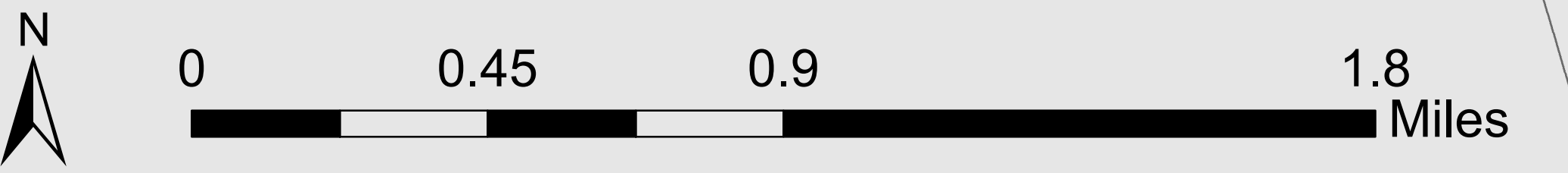
 Chairman, Board of Supervisors

TOWNSHIP OF DERRY OFFICIAL MAP

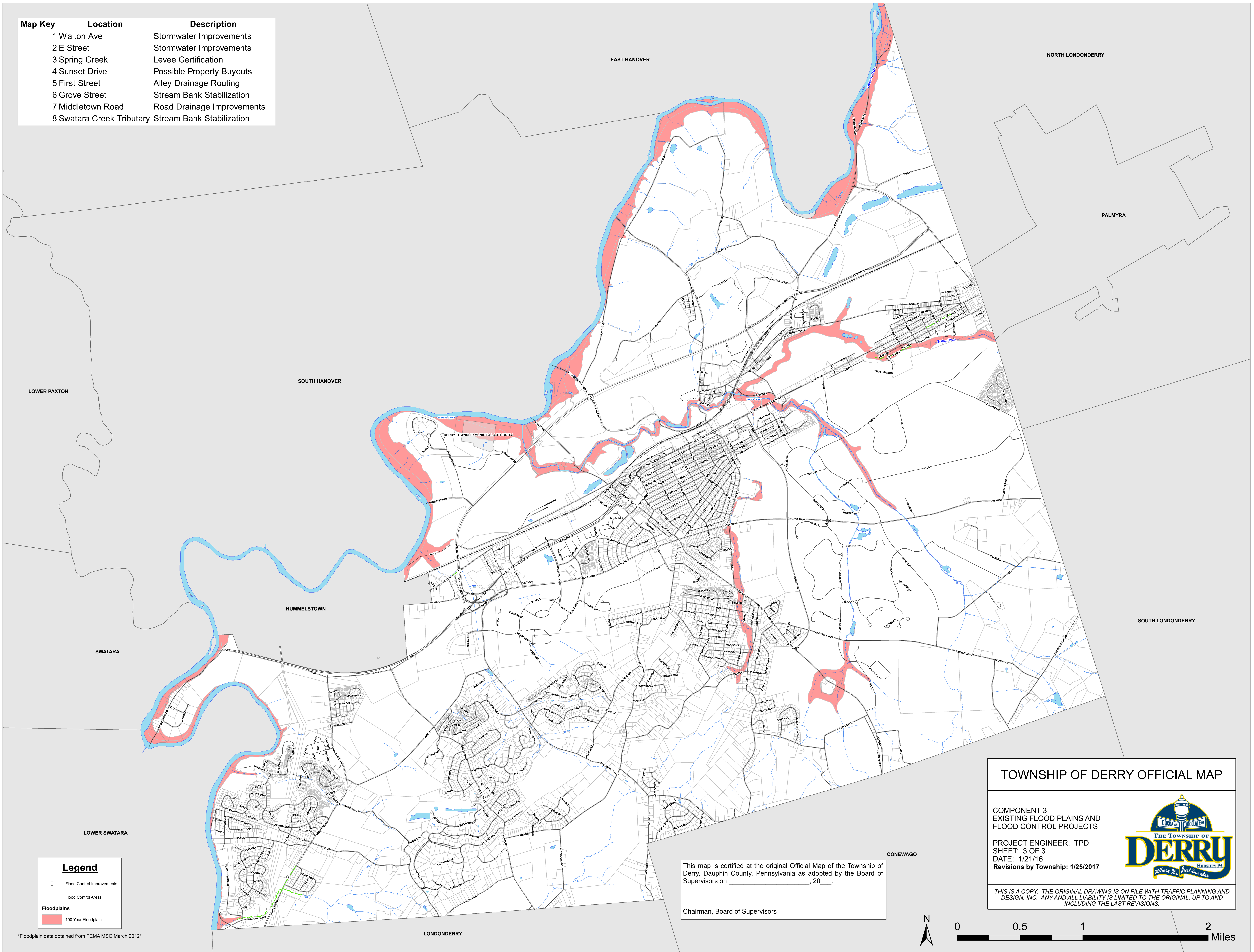
COMPONENT 2
 PARKS AND OPEN SPACES
 PROJECT ENGINEER: TPD
 SHEET: 2 OF 3
 DATE: 1/21/16
 Revisions by Township: 1/25/2017



THIS IS A COPY. THE ORIGINAL DRAWING IS ON FILE WITH TRAFFIC PLANNING AND DESIGN, INC. ANY AND ALL LIABILITY IS LIMITED TO THE ORIGINAL, UP TO AND INCLUDING THE LAST REVISIONS.



Map Key	Location	Description
1	Walton Ave	Stormwater Improvements
2	E Street	Stormwater Improvements
3	Spring Creek	Levee Certification
4	Sunset Drive	Possible Property Buyouts
5	First Street	Alley Drainage Routing
6	Grove Street	Stream Bank Stabilization
7	Middletown Road	Road Drainage Improvements
8	Swatara Creek Tributary	Stream Bank Stabilization



Legend	
○	Flood Control Improvements
—	Flood Control Areas
Floodplains	
■	100 Year Floodplain

Floodplain data obtained from FEMA MSC March 2012

This map is certified at the original Official Map of the Township of Derry, Dauphin County, Pennsylvania as adopted by the Board of Supervisors on _____, 20__.

Chairman, Board of Supervisors

TOWNSHIP OF DERRY OFFICIAL MAP

COMPONENT 3
EXISTING FLOOD PLAINS AND
FLOOD CONTROL PROJECTS

PROJECT ENGINEER: TPD
SHEET: 3 OF 3
DATE: 1/21/16
Revisions by Township: 1/25/2017



THIS IS A COPY. THE ORIGINAL DRAWING IS ON FILE WITH TRAFFIC PLANNING AND DESIGN, INC. ANY AND ALL LIABILITY IS LIMITED TO THE ORIGINAL, UP TO AND INCLUDING THE LAST REVISIONS.

