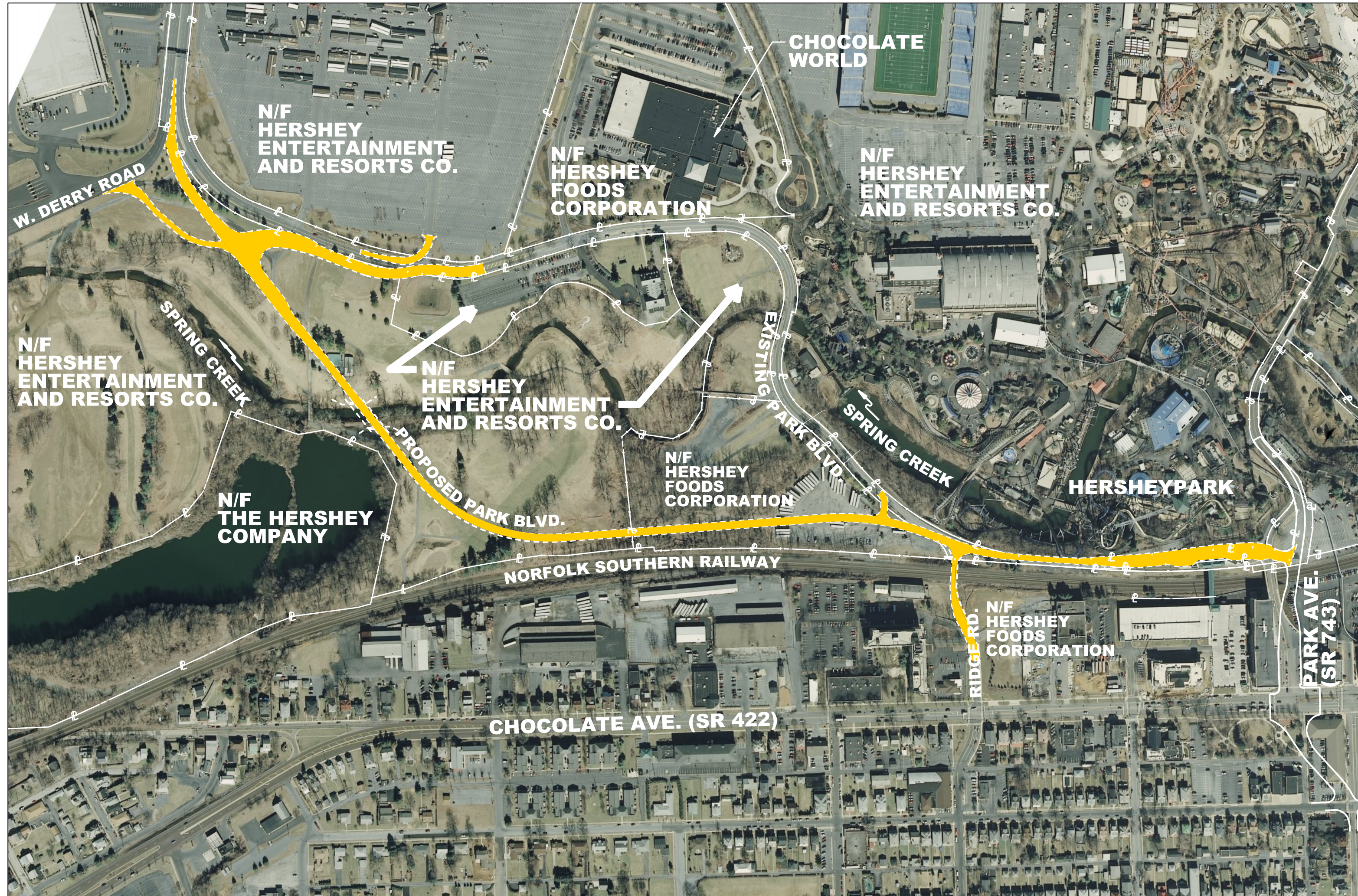


PROJECT OVERVIEW

STATION 1

TO HERSHEY PARK DRIVE (SR 0039)

TO HERSHEY PARK/
GIANT CENTER/
STADIUM-ARENA



PARK BLVD. REALIGNMENT

DERRY TOWNSHIP - PARK BLVD.
DAUPHIN COUNTY, PENNSYLVANIA

